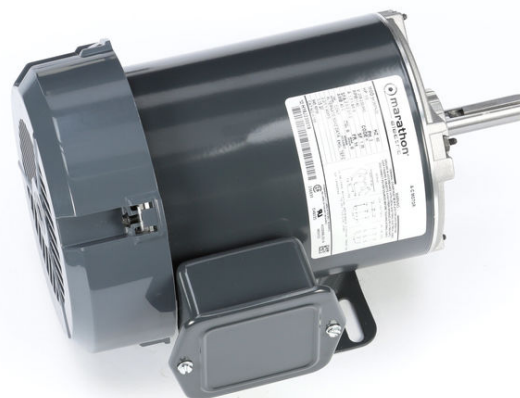


# PRODUCT INFORMATION PACKET

Model No: 5K36PN30

Catalog No: K155

1/3 HP General Purpose Motor, 3 phase, 1200 RPM, 208-230/460 V, 56 Frame, TEFC  
Three Phase TEFC Motors





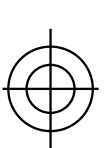
### Nameplate Specifications

Output HP	0.33 Hp	Output KW	0.25 kW
Frequency	60 Hz	Voltage	208-230/460 V
Current	1.7-1.8,0.9 A	Speed	1140 rpm
Service Factor	1.35	Phase	3
Efficiency	67.3 %	Power Factor	0
Duty	Continuous	Insulation Class	B
Design Code	B	KVA Code	K
Frame	56	Enclosure	Totally Enclosed Fan Cooled
Thermal Protection	N/R	Ambient Temperature	40 °C
Drive End Bearing Size	6203	Opp Drive End Bearing Size	6203
UL	Recognized	CSA	Yes
CE	N		

### Technical Specifications

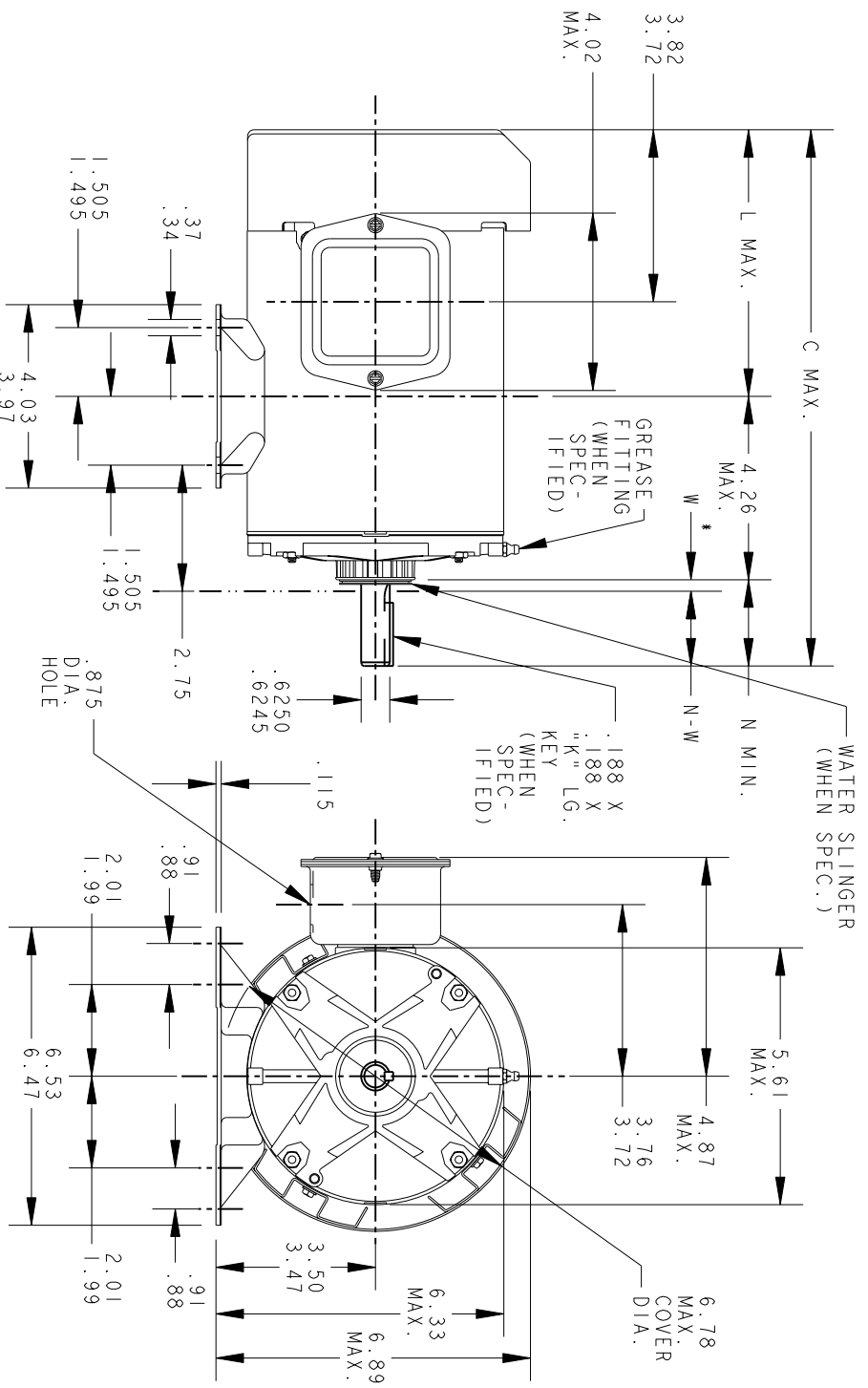
Electrical Type	Three Phase	Starting Method	N/R
Poles	6	Rotation	Counterclockwise/Clockwise
Mounting	Rigid Base	Motor Orientation	ANY
Drive End Bearing	BALL	Opp Drive End Bearing	Ball
Frame Material	Rolled Steel	Overall Length	11.4 in
Frame Length	6.22 in	Shaft Diameter	0.630 in
Shaft Extension	1.88 in		
Connection Drawing	113A930FIG2	Outline Drawing	52A102069P4

This is an uncontrolled document once printed or downloaded and is subject to change without notice. Date Created:03/11/2020



THIRD ANGLE PROJECTION

REVISIONS		REVISED	
REV.	DESCRIPTION	DATE	APPROVED
7	REVISED & REDRAWN	11/09/90	B. L. J
8	REVISED BASE SLOT LOCATION	03/07/91	B. L. J
9	CHG MADE AS PER ISO5-3080	12/06/05	GOVARDAN



\* IS A CLEARANCE DUE TO VARIATION IN PARTS AND ASSEMBLY

P	TYPE	GE SIZE	NEMA FR.	C	K	L	N	N-W	SHELL LGTH.	P	TYPE	GE SIZE	NEMA FR.	C	K	L	N	N-W	SHELL LGTH.
5	K KH	37	56	11.76	1.38	5.58	1.88	2.01/1.79											
4	K KH	36	56	11.36	1.38	5.18	1.88	2.01/1.79	9	K KH	39	56Z	10.05	1.38	3.87	1.88	2.01/1.79	4.91	
3	K KH	35	56	10.93	1.38	4.75	1.88	2.01/1.79	8	K KH	38	56Z	16.23	1.38	6.18	5.75	5.88/5.66		
2	K KH	33	56	10.55	1.38	4.37	1.88	2.01/1.79	7	K KH	39	56	12.89	1.38	6.71	1.88	2.01/1.79	7.75	
1	K KH	32	56	10.30	1.38	4.12	1.88	2.01/1.79	6	K KH	38	56	12.36	1.38	6.18	1.88	2.01/1.79		

SIGNATURES		DATE
MODEL	F. P. K	25/01/77
DETAIL		
CHECKED		
ENGRG		
MFG		
QUALITY		
ISSUED	B. L. J	03/07/91



REGAL-BELOTT CORPORATION

TITLE  
GENERAL PURPOSE MOTOR - FORM N - TOTALLY ENCLOSED  
OUTBOARD FAN - WELDED BASE - BALL OR SLEEVE BEARING

FOR ADDITIONAL INFO REFER TO:	ISSUED	QUALITY	MFG	CHECKED	ENGRG
APPLIED PRACTICES	ISSUED	QUALITY	MFG	CHECKED	ENGRG
DIMENSIONS ARE IN INCHES	ISSUED	QUALITY	MFG	CHECKED	ENGRG
MATERIAL	SOLID MODEL: 52A102069				

SCALE: 1.000	REF. No.:	SHEET 1 of 1
SIZE DRAWING	A	REV 9

REVISIONS

REV.	DESCRIPTION	DATE	APPROVED
1	CHG TO RBC FORMAT PER IS05-1777	06/15/06	MADHU
2	RENAMED 113A930_FIG-2 TO 113A930FIG2 PER IS07-0972	05/08/07	MADHU

This document is the property of REGAL-BELOIT CORPORATION ("RBC") including its subsidiaries and divisions and contains proprietary information of RBC. This document is loaned on the express condition that neither the recipient nor any other person shall be permitted to disclose or disseminate the information contained herein without the express written consent of RBC. This document shall be returned to RBC upon its request. This document may be subject to certain restrictions under U.S. export control laws and regulations.

THIRD ANGLE PROJECTION

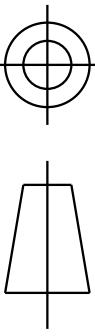
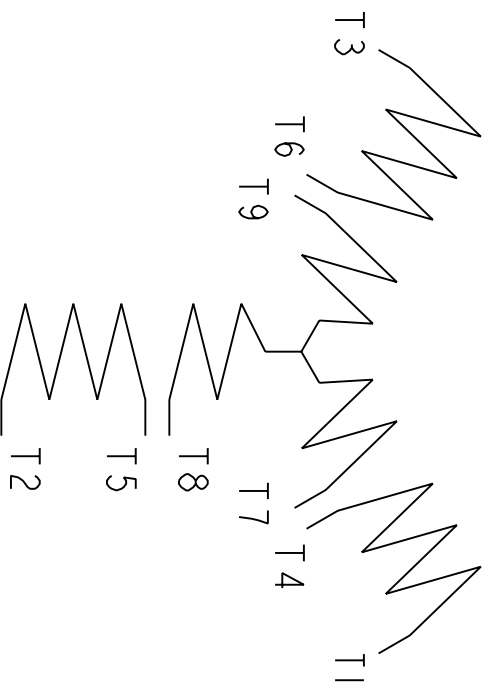


FIG. 2

3 PHASE



	VOLTS	L1	L2	L3	TOGETHER
2Y	LOW	1-7	2-8	3-9	4-5-6
1Y	HIGH	1	2	3	4-7, 5-8, 6-9

BRAKE MOTORS : CONNECT BRAKE LEADS B1 & B2 TO MOTOR LEADS T7 & T8.

FOR ADDITIONAL INFO REFER TO:		SIGNATURES		DATE
APPLIED PRACTICES	MODEL	M.D. PAPER		02/25/03
DIMENSIONS ARE IN INCHES				
TOLERANCE ON:				
1 PL DECIMALS ± 0.1				
2 PL DECIMALS ± 0.02				
3 PL DECIMALS ± 0.005				
ANGLES ± 1.0				
FRACTIONS ±				
FINISH	QUALITY	M.D. PAPER		02/25/03
	ISSUED			
MATERIAL	SOLID MODEL: 113A930FIG2			



REGAL-BELOIT CORPORATION

CONNECTION DIAGRAM

TITLE	SIZE	DRAWING	REV
	A		2
SCALE: 1.000	REF. No:		
		113A930FIG2	
			SHEET 1 of 1